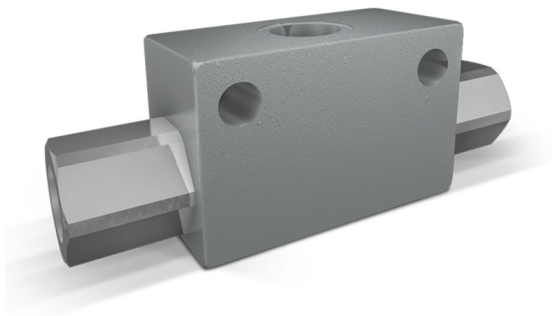
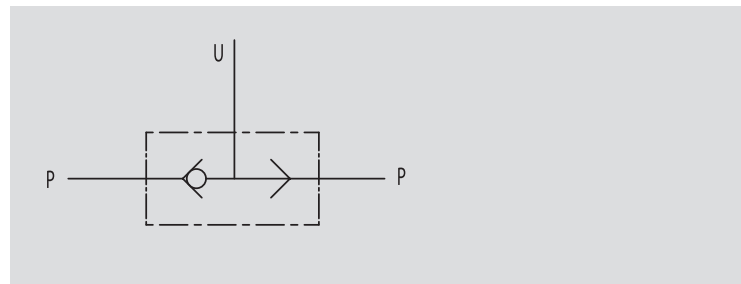


## VALVOLE COMMUTATRICI

TIPO / TYPE

VU2P

SCHEMA IDRAULICO  
HYDRAULIC DIAGRAM

## SHUTTLE VALVES

**IMPIEGO:**

Valvola utilizzata per selezionare, tra due segnali indipendenti di pressione, quello con valore maggiore ed escludere l'altro.

**MATERIALI E CARATTERISTICHE:**

Corpo: acciaio zincato  
Guarnizioni: BUNA N standard  
Tenuta: a sfera

**MONTAGGIO:**

Collegare gli attacchi P alle linee da selezionare e U alla linea da alimentare.

**USE AND OPERATION:**

This valve is used to select higher pressure between two pressure lines.

**MATERIALS AND FEATURES:**

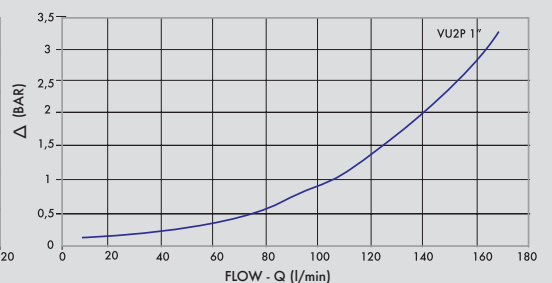
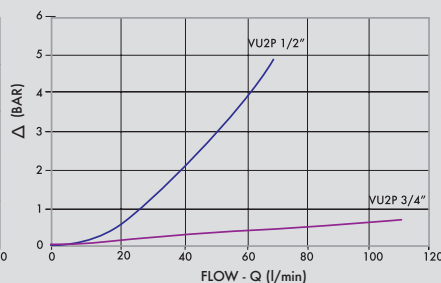
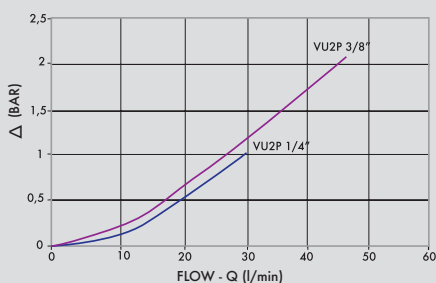
Body: zinc-plated steel  
Seal: BUNA N standard  
Tightness: ball type

**APPLICATIONS:**

Connect ports P to the 2 lines to select and U to the line to feed .

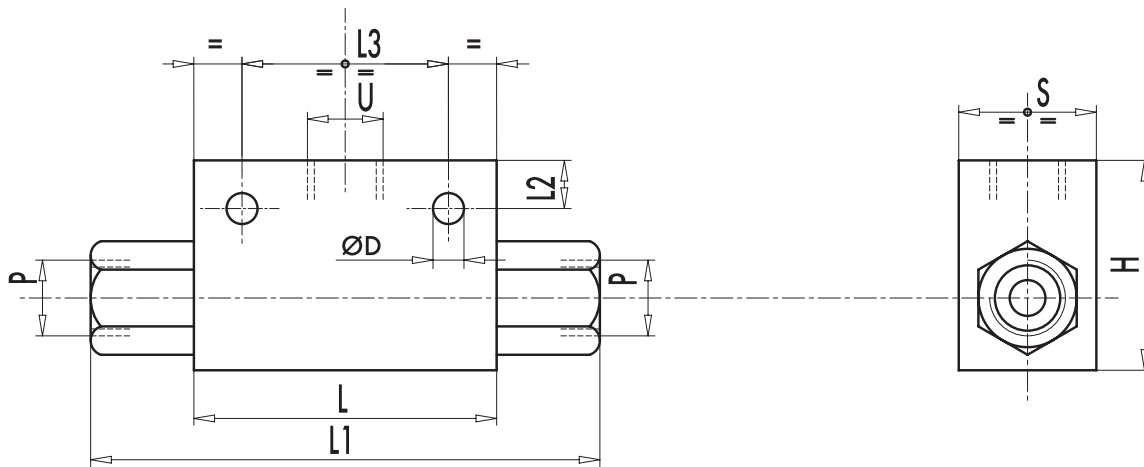
**PERDITE DI CARICO**  
PRESSURE DROPS CURVE

Temperatura olio: 50°C - Viscosità olio: 30 cSt  
Oil temperature: 50° C - Oil viscosity: 30 cSt





CODICE CODE	SIGLA TYPE	PORTATA MAX MAX FLOW Lt. / min	PRESSIONE MAX MAX PRESSURE Bar
<b>V0666</b>	VU2P 1/4"	30	450
<b>V0668</b>	VU2P 3/8"	45	450
<b>V0670</b>	VU2P 1/2"	70	450
<b>V0680</b>	VU2P 3/4"	110	350
<b>V0685</b>	VU2P 1"	150	300



CODICE CODE	SIGLA TYPE	U - P GAS	L mm	L1 mm	L2 mm	L3 mm	H mm	S mm	ØD mm	PESO WEIGHT kg
<b>V0666</b>	VU2P 1/4"	G1/4"	60	104	9	44	40	30	8,5	0,560
<b>V0668</b>	VU2P 3/8"	G3/8"	60	104	9	44	40	30	8,5	0,530
<b>V0670</b>	VU2P 1/2"	G1/2"	60	104	12	44	50	30	8,5	0,652
<b>V0680</b>	VU2P 3/4"	G3/4"	80	127	12	44	58	35	8,5	1,086
<b>V0685</b>	VU2P 1"	G1"	80	126	11	60	80	50	10,5	1,870