



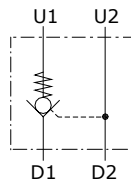
## Type VBPSL/T pilot operated check valves

- Single acting

Technical specifications and diagrams are measured with mineral oil of 46 cSt viscosity at 40°C (104°F) temperature.

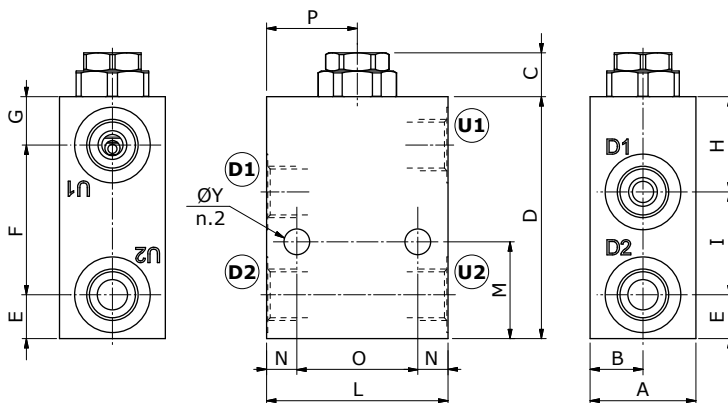
	<b>VBPSL/T 38</b>	<b>VBPSL/T 12</b>	<b>VBPSL/T 34</b>
Nominal flow	<b>25 l/min (6.6 US gpm)</b>	50 l/min (13.2 US gpm)	100 l/min (26.4 US gpm)
Max. pressure	Aluminium body = 210 bar (3050 psi) Steel body = 350 bar (5100 psi)		
Oil leakage	0.25 cm <sup>3</sup> /min (0.015 in <sup>3</sup> /min) at 210 bar (3050 psi)		
Fluid	mineral based oil		
Viscosity	from 10 to 200 cSt		
Max. level of contamination	18/16/13 ISO4406		
Fluid temperature	with NBR seals: from -20°C (-4°F) to 80°C (176°F)		
Environmental temp. for working conditions	from -40°C (-40°F) to 100°C (212°F)		
Weight	aluminium	<b>0.48 kg (1.06 lb)</b>	0.75 kg (1.65 lb)
	steel	1.16 kg (2.56 lb)	1.63 kg (3.59 lb)
			1.79 kg (3.95 lb)
			4.19 kg (9.24 lb)

NOTE - For different conditions, please contact Walvoil Sales Dpt.



### Dimensions

<b>Valve type</b>	<b>All ports</b>
<b>VBPSL/T 38</b>	G3/8
<b>VBPSL/T 12</b>	G1/2
<b>VBPSL/T 34</b>	G3/4
<b>Valve type</b>	<b>All ports</b>
<b>VBPSL/T 12/SAE</b>	SAE10
<b>VBPSL/T 34/SAE</b>	SAE12

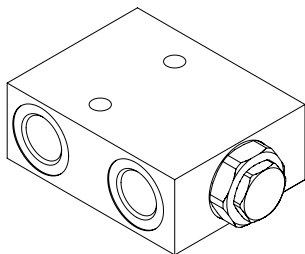


Dimensions are in mm-in

Valve type	A	B	C	D	E	F	G	H	I	L	M	N	O	P	ØY
<b>VBPSL/T 38</b>	35 1.38	17.5 0.69	14.5 0.57	80 3.15	14.5 0.57	49.5 1.95	16 0.63	31.5 1.24	34 1.34	60 2.36	32 1.26	10 0.39	40 1.57	20 0.79	8.5 0.33
<b>VBPSL/T 12</b>	35	17.5	13	90	18	51	21	38	34	70	35	15	40	20	8.5
<b>VBPSL/T 12/SAE</b>	1.38	0.69	0.51	3.54	0.71	2.01	0.83	1.50	1.34	2.75	1.38	0.59	1.57	0.79	0.33
<b>VBPSL/T 34</b>	50	25	16.5	135	22	83	30	57.5	55.5	90	55	20	50	25	10.5
<b>VBPSL/T 34/SAE</b>	1.97	0.98	0.65	5.31	0.87	3.27	1.18	2.26	2.18	3.54	2.16	0.79	1.97	0.98	0.41

### Ordering codes and description composition

Port size — Pilot ratio  
**VBPSL/T 38/p4**



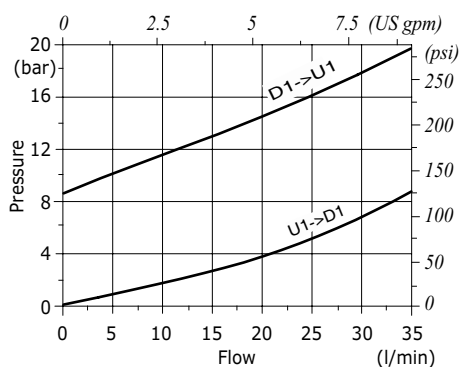
#### VBPSL/T complete valves

TYPE	CODE	DESCRIPTION
<b>VBPSL/T 38/p4</b>	1412021100	Aluminium body, pilot ratio 1:4, G3/8 ports
<b>VBPSL/T 38/p4/ac</b>	1412022100	Steel body, as previous one
<b>VBPSL/T 12/p4</b>	1412031100	Aluminium body, pilot ratio 1:4, G1/2 ports
<b>VBPSL/T 12/p4/ac</b>	1412032100	Steel body, as previous one
<b>VBPSL/T 34/p4</b>	1412041100	Aluminium body, pilot ratio 1:4, G3/4 ports
<b>VBPSL/T 34/p4/ac</b>	1412042101	Steel body, as previous one
<b>VBPSL/T 12/p4/SAE</b>	1412031200	Aluminium body, pilot ratio 1:4, SAE10 ports
<b>VBPSL/T 34/p4/SAE</b>	1412042200	Aluminium body, pilot ratio 1:4, SAE12 ports

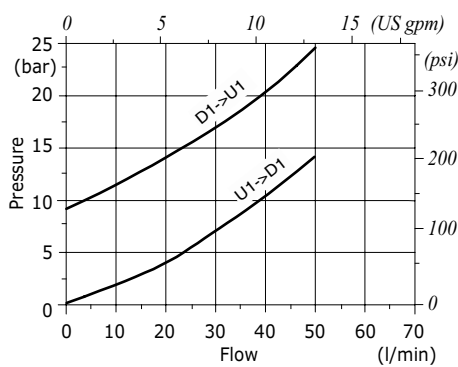
For other steel body configurations, other port sizes, SAE thread and configurations with FPM (Viton) seals, please contact our Sales Dpt.

### Rating diagram

**VBPSL/T 38 pressure drop vs. flow**



**VBPSL/T 12 pressure drop vs. flow**



**VBPSL/T 34 pressure drop vs. flow**

