

Types and ordering codes

Valve type	Coil	Voltage	Connector					
			ISO4400	Deutsch DT	AMP JPT	Packard Weather-pack	Packard Metri-pack	Flying leads
Directional solenoid valves								
EA08A	BE	12 VDC	4SL1000120A	4SL1000123A ⁽⁶⁾ 4SL1000140 ⁽³⁻⁶⁾ 4SL1000124 ⁽²⁾	-	-	-	4SL1000122A
		24 VDC	4SL1000240A 4SL1030240 ⁽¹⁾	4SL1002401 ⁽⁶⁾	4SL1000125A ⁽³⁻⁵⁾	-	-	-
		110 VDC	4SL1011100 4SL1031100 ⁽¹⁾	-	-	-	-	-
		220 VDC	4SL1022200 4SL1032200 ⁽¹⁾	-	-	-	-	-
EA08B EW08A EJ08F EJ08G	BT	10 VDC	4SL3000100	-	-	-	-	-
		12 VDC	4SL3000120 4SL3000126 ⁽⁴⁾	4SL3000130 ⁽⁶⁾ 4SL3000134 ⁽³⁻⁶⁾ 4SL3000128 ⁽²⁾	4SL3000122 ⁽⁵⁾ 4SL30001200 ⁽³⁻⁵⁾	4SL3000124 ⁽²⁾	4SL3000127 ⁽²⁾	4SL300012C
		24 VDC	4SL3000240 4SL3030240 ⁽¹⁾	4SL3000249 ⁽⁶⁾ 4SL300024C ⁽³⁻⁶⁾	4SL3000248 ⁽⁵⁾	-	-	4SL3000246
		26 VDC	4SL3000260	-	-	-	-	-
		48 VDC	4SL3000480 4SL3030480 ⁽¹⁾	-	-	-	-	-
		110 VDC	4SL3001100 4SL3031100 ⁽¹⁾	-	-	-	-	-
		220 VDC	4SL3002200 4SL3032200 ⁽¹⁾	-	-	-	-	-
EW10M	BH	12 VDC	4SLD001200A	4SLD001201A ⁽⁶⁾	4SLD001207A ⁽⁶⁾	-	-	4SLD001203A
		24 VDC	4SLD002400A	4SLD002401A ⁽⁶⁾	4SLD002407A ⁽⁶⁾	-	-	4SLD002403A
		10 VDC	4SLE001000A	-	-	-	-	-
EE08A EC..M EF..M EJ8CA EJ08M ER08M ET08M EL08B	BER	12 VDC	4SLE001200A 4SLE001217A ⁽³⁾	4SLE001201A ⁽⁵⁾ 4SLE001209A ⁽³⁻⁵⁾ 4SLE001202A ⁽⁶⁾ 4SLE001216A ⁽³⁻⁶⁾ 4SLE001206A ⁽²⁾	4SLE001203A ⁽⁵⁾ 4SLE001211A ⁽³⁻⁵⁾	4SLE001210A ⁽²⁾	4SLE001214 ⁽²⁾	4SLE001207A
		24 VDC	4SLE002400A 4SLE002408A ⁽³⁾ 4SLE302400A ⁽¹⁾	4SLE002401A ⁽⁵⁾ 4SLE002407A ⁽³⁻⁵⁾ 4SLE002402A ⁽⁶⁾	4SLE002403A ⁽⁵⁾	-	-	4SLE002404A
		48 VDC	4SLE004800A 4SLE304800A ⁽¹⁾	-	-	-	-	-
		110 VDC	4SLE011000A 4SLE311000A ⁽¹⁾	-	-	-	-	-
		220 VDC	4SLE022000A 4SLE322000A ⁽¹⁾	-	-	-	-	-
EE10A EW10A EW10B	BIN19	10,5 VDC	4SL6000100	-	-	-	-	-
		12 VDC	4SL6000121	-	-	-	-	-
		24 VDC	4SL6000240	-	-	-	-	-
EE12A EW12A EW12C EJ12A ET12A	BIN22	12 VDC	4SL6000128	-	-	-	-	-
		24 VDC	4SL6000245	-	-	-	-	-
EJ10M EL08A ER10M ET10M	BC	10,5 VDC	4SL8000110	-	-	-	-	-
		12 VDC	4SL8000120	4SL800012BA ⁽⁶⁾ 4SL8001201A ⁽⁶⁻³⁾	4SL8000127 ⁽⁵⁾ 4SL8000130 ⁽⁵⁻³⁾	-	-	4SL800012A
		24 VDC	4SL8000240 4SL8030240 ⁽¹⁾	4SL8000243 ⁽⁶⁾	4SL8000241 ⁽⁵⁾	-	-	4SL8000242
		26 VDC	4SL8000260	-	-	-	-	-
		48 VDC	4SL8030480 ⁽¹⁾	-	-	-	-	-
		110 VDC	4SL8031100 ⁽¹⁾	-	-	-	-	-
EL10C	BQ16	12 VDC	4SL8000121	4SL8000128 ⁽⁵⁾	-	-	4SL8000124 ⁽²⁾	4SL8000125
		24 VDC	4SL8002400	4SL8000245 ⁽⁵⁾	-	-	-	-

Types and ordering codes

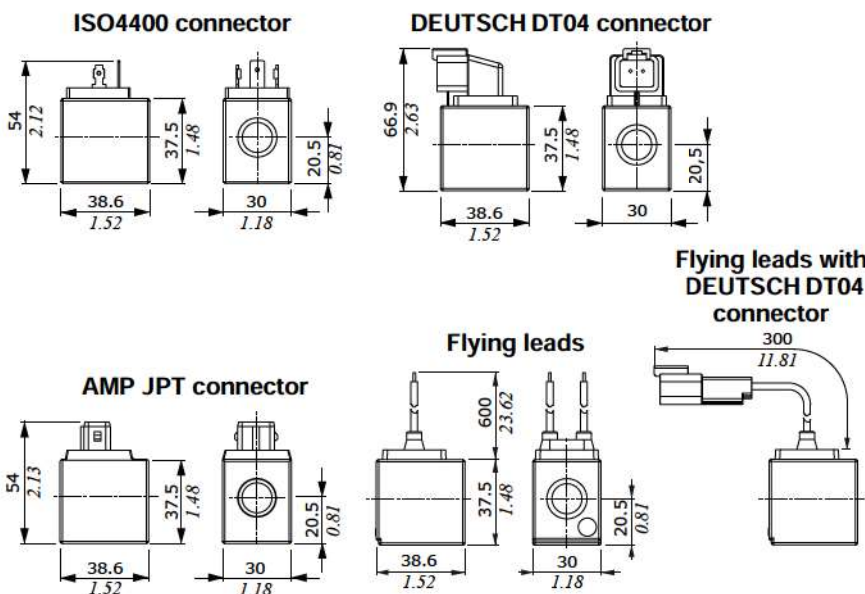
Valve type	Coil	Voltage	Connector					
			ISO4400	Deutsch DT	AMP JPT	Packard Weather-pack	Packard Metri-pack	Flying leads
Pressure relief valves - Pressure reducing valves - Flow control pressure compensated valves								
MC08Y MP16Y RD08W RM..W RP..W	MP35	12 VDC	4SL4000120	-	-	-	-	-
		24 VDC	4SL4000240	-	-	-	-	-
MC10X MP..T MP..X PP..X PU..X EE..X EC..T	BQP19	12 VDC	4SL5000126A	4SL5000125A ⁽⁶⁾	4SL5000129A ⁽⁵⁾	-	-	-
		24 VDC	4SL5000245A	4SL5000244A ⁽⁶⁾	4SL5000248A ⁽⁵⁾	-	-	-
	BH	12 VDC	4SLD001200A	4SLD001201A ⁽⁶⁾	4SLD001207A ⁽⁶⁾	-	-	4SLD001203A
		24 VDC	4SLD002400A	4SLD002401A ⁽⁶⁾	4SLD002407A ⁽⁶⁾	-	-	4SLD002403A
RD08S RD08T	MSM19	12 VDC	4SL5000128	-	-	-	5SL5000122 ⁽²⁾	4SL5000122
		24 VDC	4SL5000247	-	-	-	5SL5000243 ⁽²⁾	4SL5000243
RP08X	BDP19	12 VDC	4SL5000120	-	-	-	-	-
		24 VDC	4SL5000240	-	-	-	-	-
Mating connectors (For connector with rectifier see following table)			4CN1009995	5CON140031	5CON003	5CON001	5CON017	-

Notes: ⁽¹⁾ supply with AC and use only with rectifier connector - ⁽²⁾ with flying leads - ⁽³⁾ with bidirectional diode - ⁽⁵⁾ with unidirectional diode
⁽⁵⁾ integrated perpendicular type - ⁽⁶⁾ integrated parallel type

Voltage	ISO 4400 mating connector with rectifier			
	BT type coil	BE type coil	BER type coil	BC type coil
24 VDC	4CN3010240	4CN1010240	4CN1010240	4CN3010240
48 VDC	4CN3010480	4CN1010480	4CN1010480	4CN3010480
110 VDC	4CN3011100	4CN1011100	4CN1011100	4CN3011100
220 VDC	4CN3012200	4CN1012200	4CN1012200	4CN3012200

Dimensional data and features

BE type



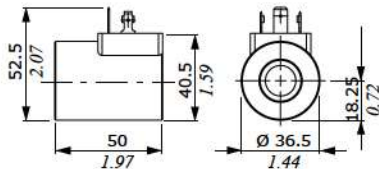
Features

- Nominal voltage tolerance : ±10%
- Power rating : 18.7 W - 12 VDC
: 18.6 W - 24 VDC
: 17.3 W - 110 VDC
: 15.7 W - 220 VDC
: 18.3 W - 24 RAC
: 16 W - 110 RAC
: 16 W - 220 RAC
- Max. operating current . . . : 1.56 A - 12 VDC
: 0.77 A - 24 VDC
: 0.157 A - 110 VDC
: 0.08 A - 220 VDC
: 0.85 A - 24 RAC
: 0.16 A - 110 RAC
: 0.08 A - 220 RAC
- Coil insulation : Class F (155°C - 311°F)
- Weather protection : IP65 - ISO4400
: IP69K - Deutsch DT
- Insertion : 100%

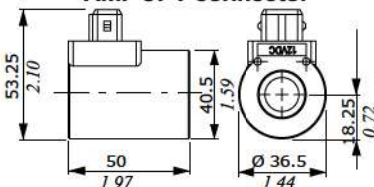
Dimensional data and features

BT type

ISO4400 connector



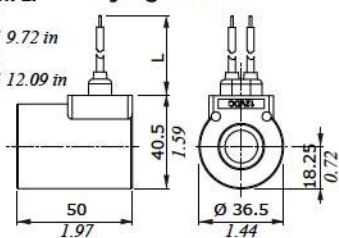
AMP JPT connector



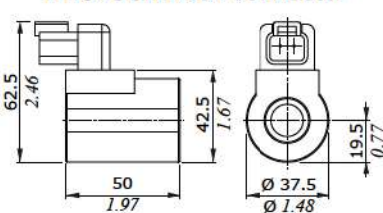
Dimension L:

- 12 VDC = 247 mm / 9.72 in
- 24 VDC = 307 mm / 12.09 in

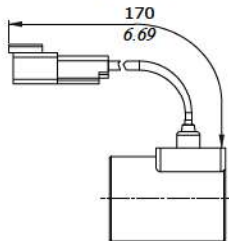
Flying leads



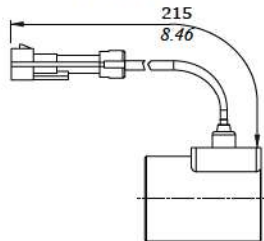
DEUTSCH DT04 connector



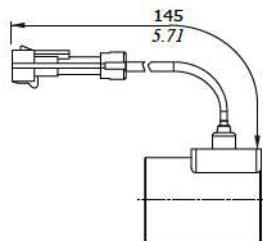
Flying leads with DEUTSCH DT04 connector



Flying leads with PACKARD WEATHER-PACK connector



Flying leads with PACKARD METRI-PACK connector

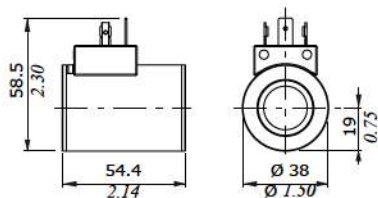


Features

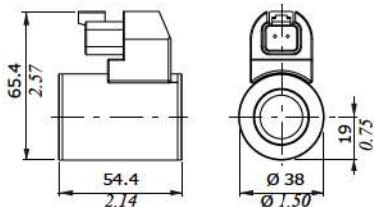
- Nominal voltage tolerance : ±10%
- Power rating : 19 W - 10 VDC
: 21 W - 12/24/26 VDC
: 20.3 W - 48 VDC
: 17.3 W - 110 VDC
: 17.7 W - 220 VDC
: 19.9 W - 24 RAC
: 20.7 W - 48 RAC
: 20 W - 110 / 220 RAC
- Max. operating current . . : 1.9 A - 10 VDC
: 1.77 A - 12 VDC
: 0.89 A - 24VDC
: 0.84 A - 26 VDC
: 0.43 A - 48 VDC
: 0.16 A - 110 VDC
: 0.08 A - 220 VDC
: 0.93 A - 24 RAC
: 0.47 A - 48 RAC
: 0.18 A - 110 RAC
: 0.09 A - 220 RAC
- Coil insulation : Class F (155°C - 311°F)
- Weather protection : IP65 - ISO4400
: IP69K - Deutsch DT
: IP65 - AMP JPT
: IP67 - Weatherpack
: IP67 - Metri-pack
- Insertion : 100%

BH type

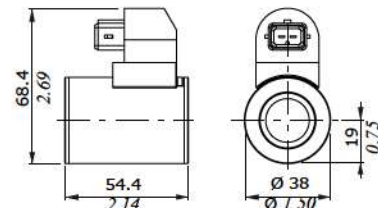
ISO4400 connector



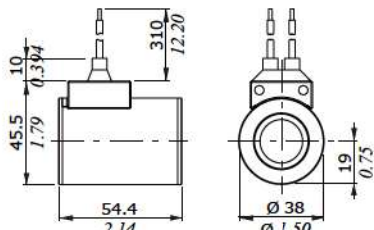
DEUTSCH DT04 connector



AMP JPT connector



Flying leads



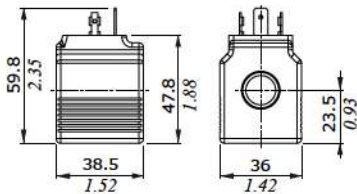
Features

- Nominal voltage tolerance . : ±10%
- Power rating : 33 W - 12/24 VDC
- Max. oper. current (on/off) . : 2.75 A - 12 VDC
: 1.38 A - 24 VDC
- Max. prop. control current . : 1.7 A - 12 VDC
: 0.85 A - 24 VDC
- Coil insulation : Class H
(180°C - 356°F)
- Weather protection : IP65 - ISO4400
: IP69K -Deutsch DT
: IP65 - AMP JPT
- Insertion : 100%

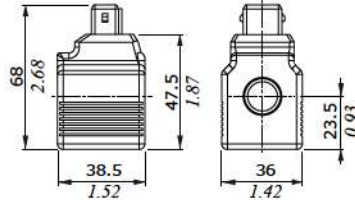
Dimensional data and features

BER type

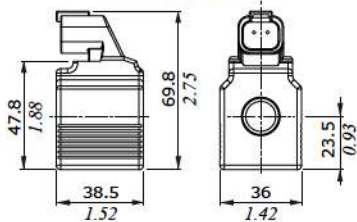
ISO4400 connector



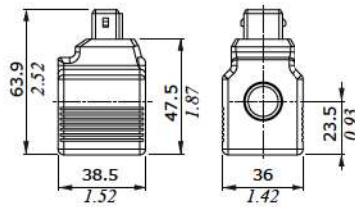
DEUTSCH DT04 connector
(perpendicular type)



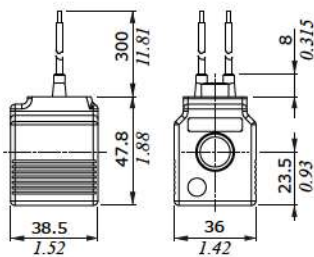
DEUTSCH DT04 connector
(parallel type)



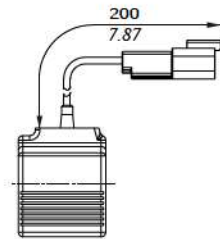
AMP JPT connector



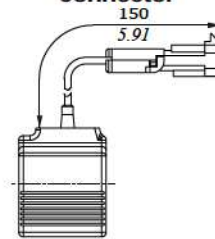
With flying leads



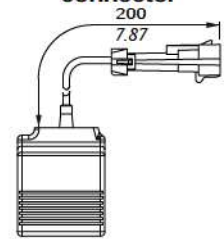
Flying leads with
DEUTSCH DT04 connector



Flying leads with
PACKARD WEATHER-PACK
connector



Flying leads with
PACKARD METRI-PACK
connector

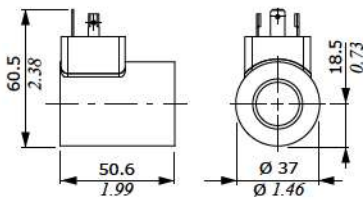


Features

- Nominal voltage tolerance : $\pm 10\%$
- Power rating : 19.2 W - 10/12/24/48/
110/220 VDC
: 19 W - 24/110/220 RAC
: 19.2 W - 48 RAC
- Max. operating current . . . : 1.9 A - 10 VDC
: 1.61 A - 12 VDC
: 0.80 A - 24 VDC
: 0.40 A - 48 VDC
: 0.17 A - 110 VDC
: 0.09 A - 220 VDC
: 0.89 A - 24 RAC
: 0.45 A - 48 RAC
: 0.19 A - 110 RAC
: 0.09 A - 220 RAC
- Coil insulation : Class H (180°C - 350°F)
- Weather protection : IP65 - ISO4400
: IP69K - Deutsch DT
: IP65 - AMP JPT
: IP67 - Weatherpack
: IP67 - Metri-pack
- Insertion : 100%

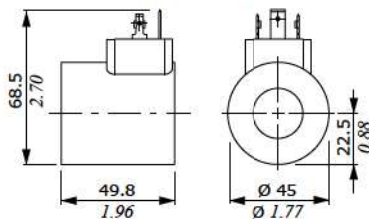
BIN19 type

ISO4400 connector



BIN22 type

ISO4400 connector

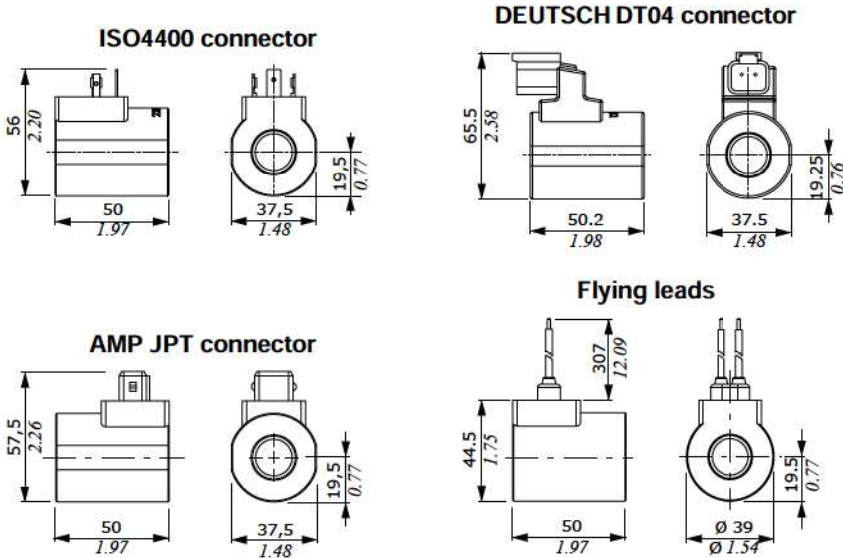


Features

- Nominal voltage tolerance : $\pm 10\%$
- Coil insulation : Class F (155°C - 311°F)
- Weather protection : IP65 - ISO4400
- Insertion : 100%
- BIN19**
- Power rating : 26 W - 10.5 VDC
: 29 W - 12 VDC
: 31 W - 24 VDC
- Max. operating current . . . : 2.48 A - 10.5 VDC
: 2.41 A - 12 VDC
: 1.29 A - 24 VDC
- BIN22**
- Power rating : 32.6 W - 12 VDC
: 31 W - 24 VDC
- Max. operating current . . . : 2.72 A - 12 VDC
: 1.29 A - 24 VDC

Dimensional data and features

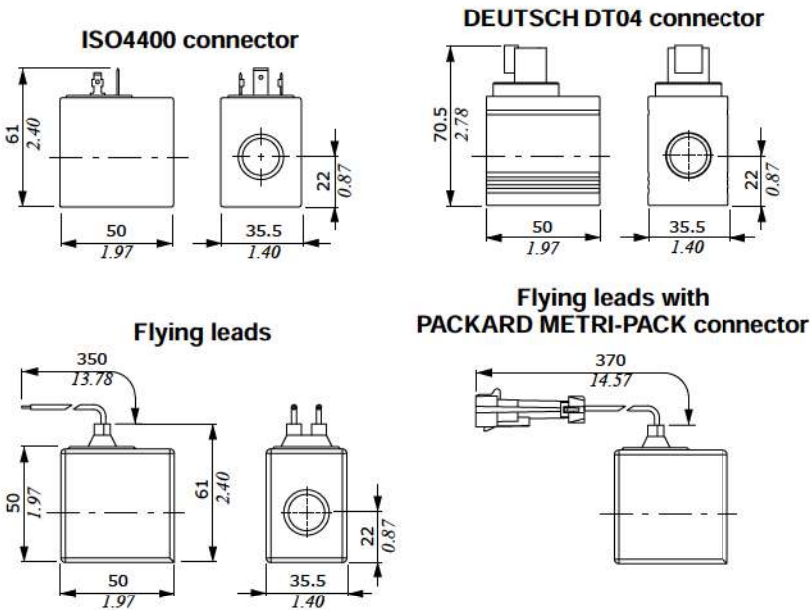
BC type



Features

- Nominal voltage tolerance : $\pm 10\%$
- Power rating : 26.9 W - 10.5 VDC
 : 26.2 W - 12 VDC
 : 25.9 W - 24 VDC
 : 24 W - 26 VDC
 : 26 W - 24/48/110/220 RAC
- Max. operating current . . . : 2.6 A - 10.5 VDC
 : 2.19 A - 12 VDC
 : 1.08 A - 24 VDC
 : 0.92 A - 26 VDC
 : 1.2 A - 24 RAC
 : 0.6 A - 48 RAC
 : 0.3 A - 110 RAC
 : 0.15 A - 220 RAC
- Coil insulation : Class H (180°C - 356°F)
- Weather protection : IP65 - ISO4400
 : IP65 - AMP JPT
 : IP69K - Deutsch DT
- Insertion : 100%

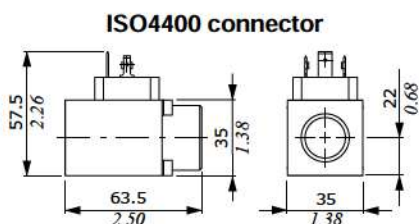
BQ16 type



Features

- Nominal voltage tolerance : $\pm 10\%$
- Power rating : 30 W - 12/24 VDC
- Max. operating current . . . : 2.5 A - 12 VDC
 : 1.25 A - 24 VDC
- Coil insulation : Class H (180°C - 356°F)
- Weather protection : IP65 - ISO4400
 : IP69K - Deutsch DT
 : IP67 - Metri-pack
- Insertion : 100%

MP35 type



Features

- Nominal voltage tolerance : $\pm 10\%$
- Power rating : 11.2 W - 12 VDC
 : 11.4 W - 24 VDC
- Max. prop. control current : 1.25 A - 12 VDC
 : 0.68 A - 24 VDC
- Coil insulation : Class F (155°C - 311°F)
- Weather protection : IP65 - ISO4400
- Insertion : 100%